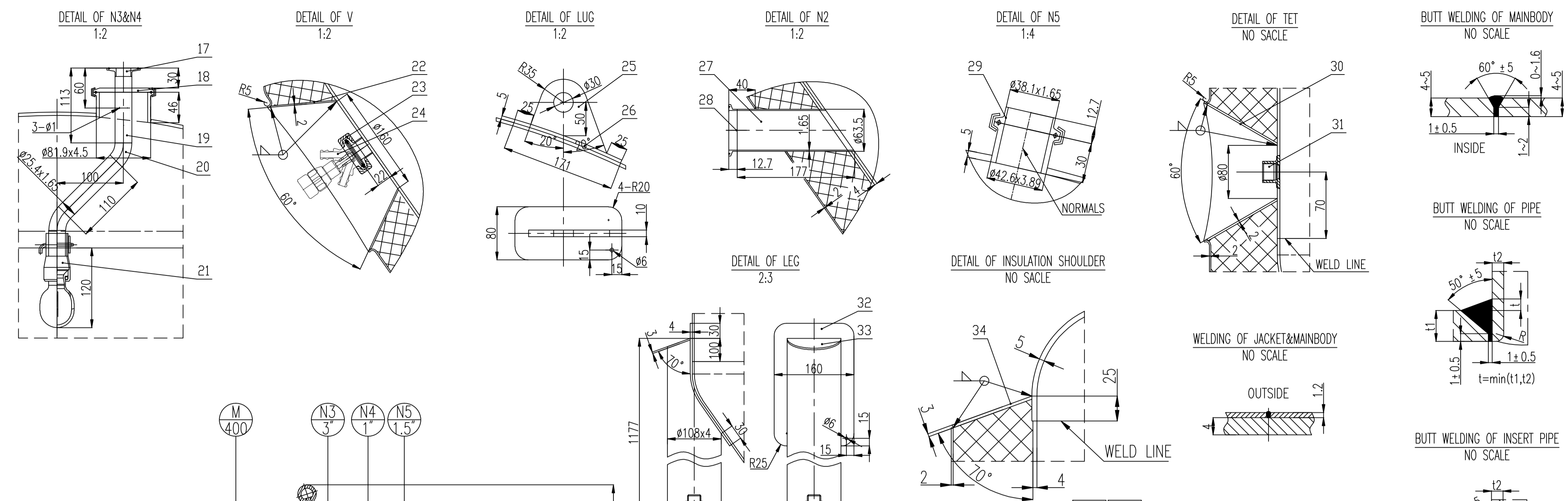


REV	NO	DATE	DESCRIPTION



DESIGN DATA TABLE			
DESIGN PARAMETER		DESIGN, FABRICATION AND INSPECTION STANDARD	
CERTIFICATION MARK WITH THE U DESIGNOR	Y/N	YES	1 ASME BOILER AND PRESSURE VESSEL CODE, SECT.VIII DIV.1, 2015ED
NB REGISTRATION REQUIRED	Y/N	NO	FABRICATION AND INSPECTION REQUIREMENTS
DESIGN PRESSURE	Bar	2	6
WORK PRESSURE	Bar	2	≤6
MWP	Bar	2	AT 40 °C -10/40
DESIGN TEMPERATURE	°C	-10/40	-10/40
WORK TEMPERATURE	°C	-4/40	-4/40
MDWT	°C	-10	-10
MEDIUM NAME	BEER	GLYCOL WATER	
MEDIUM CHARACTERISTIC	NON-LEATHAL	NON-LEATHAL	
MEDIUM DENSITY	kg/m³	1004	950
MAIN PRESSURE PART MATERIAL	SA-240M 304	SA-240M 304	
CORROSION ALLOWANCE	mm	0	0
JOINT EFFICIENCY (SHELL/HEAD)		0.85/1	0.8
CAPACITY	m³	0.9	0.0045
HEAT TRANSFER AREA	m²	1.31	
INSULATION MATERIAL	mm	100/PU	
WEIGHT FULL OF WATER	kg	1280	
EQUIPMENT NET WEIGHT	kg	380	
ERECTION WEIGHT	kg	380	
OPERATION WEIGHT	kg	970	

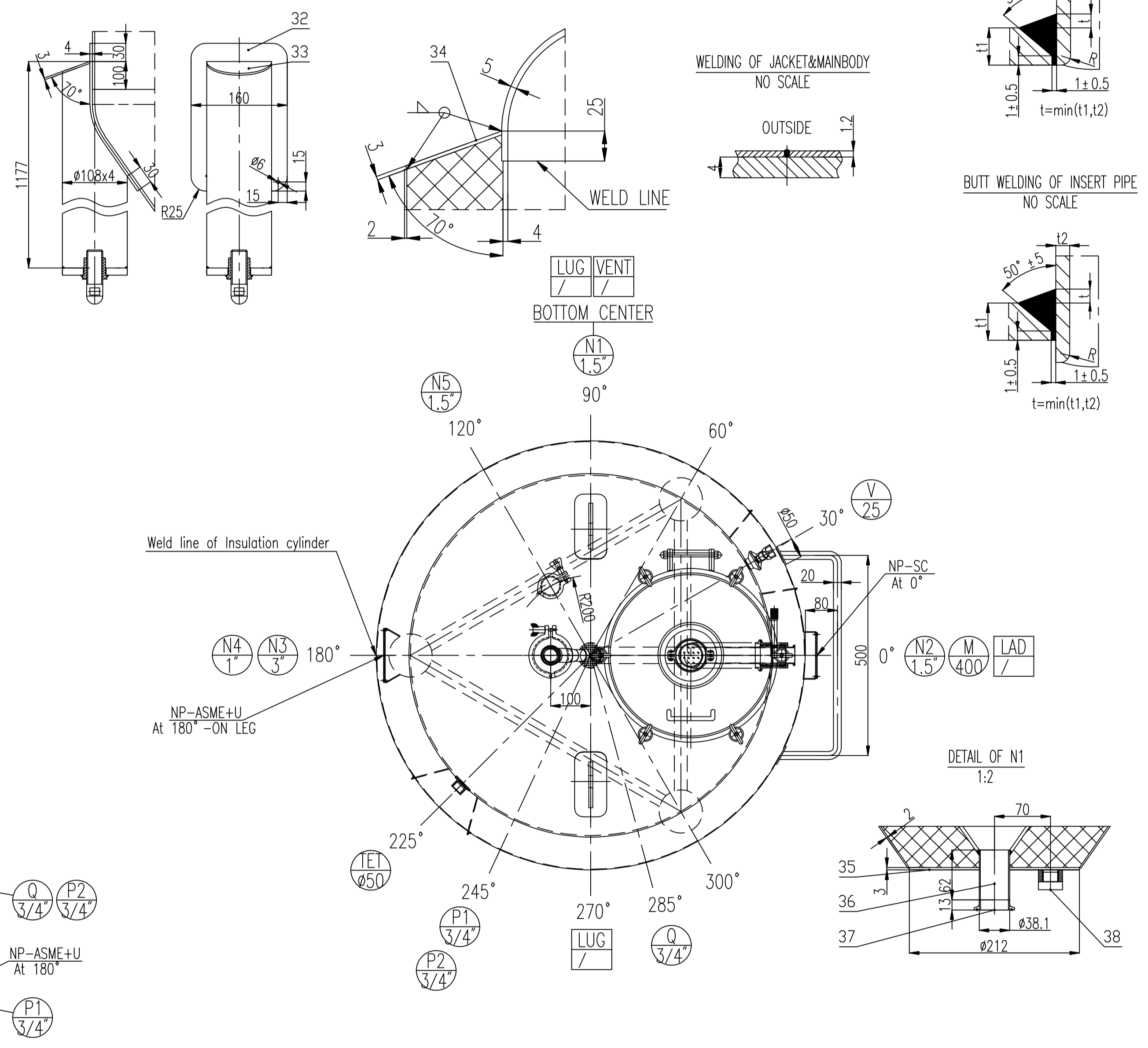
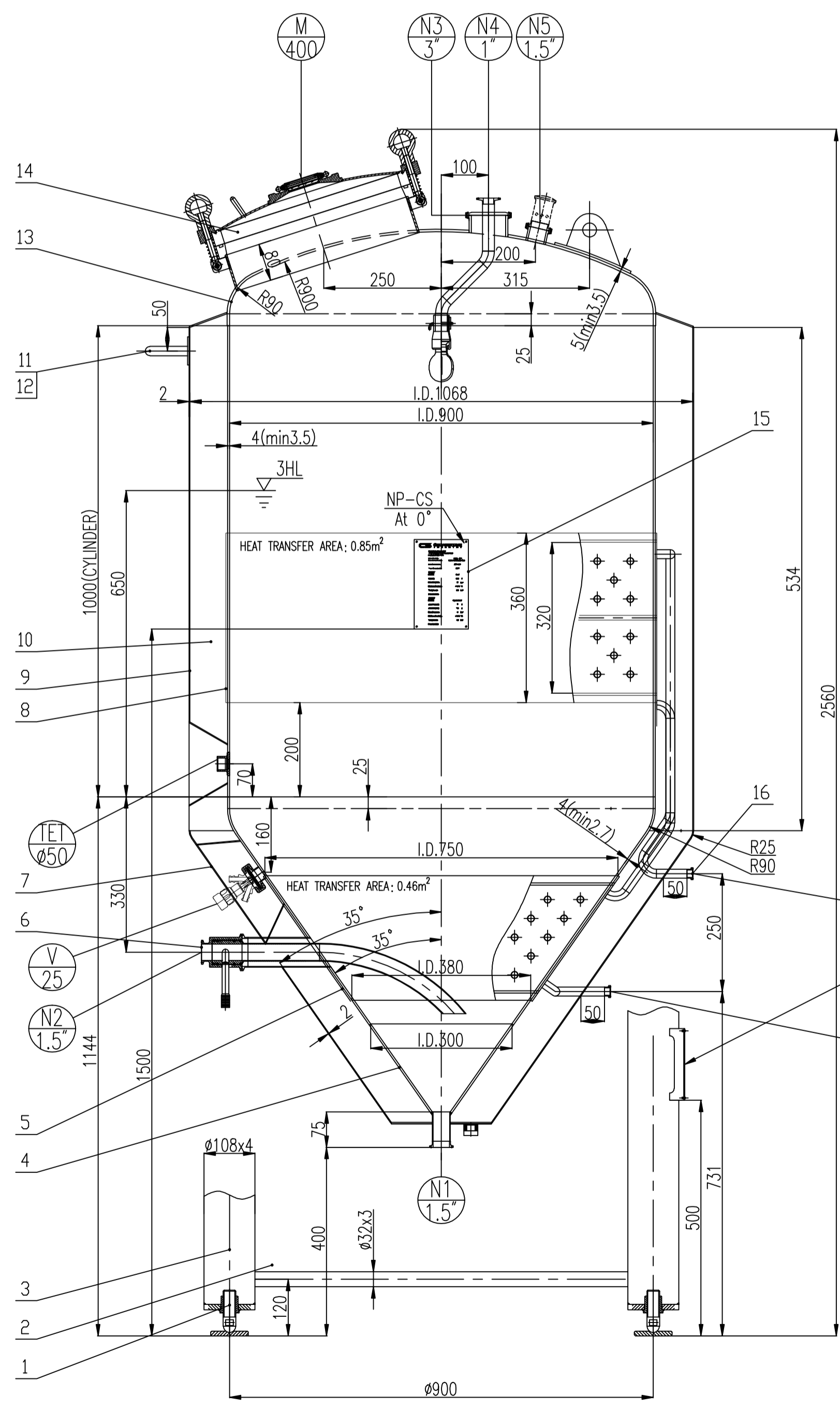
TECHNIQUE REQUEMENT

- The equipment manufacturing has been completed, the inner surface has no welding cap and the outer surface has no scratches.
- The equipment inside surface including attachments are polished to Ra<0.6μm except 2B plate. The outside surface are polished to Ra<0.8μm except drawing plate.
- All right angles of interior equipment should be rounded required.
- This jacket is laser jacket and inside of jacket has tanken to prevent short-circuiting.
- Water damage shall be cleaned after water test, if the requirement can not meet, should control the chloride ion content of water is not more than 25mg/l.
- Weld the insulation plate after the shell welding inspection that is approved.
- Weld is full inspection covered by jacket according to UW-51.
- Stainless steel outer surface for the insulation layer before coated with epoxy paint twice. Each layer tickness is 80μm.
- The seismic load and the wind load is consistent with the calculation report.
- The category A of the manhole shall be SPOT-RT as per UW-52.

NOZZLE SCHEDULE					
MARK	NPS(DN)	CONNECTIONS SIZES STANDARDS	TYPE&FACE	SERVICE	REMARK
N1	1.5"	3A(φ38.1x1.65)	CLAMPS	Outlet	
N2	1.5"	3A(φ38.1x1.65)	CLAMPS	Inlet	
N3	3"	3A(φ61.9x4.5)	CLAMPS	CIP Connector	
N4	1"	3A(φ25.4x1.65)	CLAMPS	CIP Connector	
N5	1.5"	3A(φ42.6x3.9)	CLAMPS	Relife Valve	
P1&P2	3/4"	3A(φ19.05x1.65)	CLAMPS	Jacket Inlet	
Q	3/4"	3A(φ19.05x1.65)	CLAMPS	Jacket Inlet	
V	25	φ29	/	Sampling Valve	DWQ-03
M	400	I.D.400x4	/	Manhole With Glass	
TET	φ50	G3/4"	THREAD	TET	0900579250

NO.	DRAWING NO. OR STANDARD	TITLE	MATERIAL	QUANT.	UNIT	TOTAL	REMARK
10		INSULATION(PU)	PU	1	20	20	
9		INSULATION SHELL I.D.1068x2t H=1068	304	1	57	57	
8	XT17055R-03	SHELL&JACKET	ASSEMBLY	1	100	100	
7		INSULATION CONE I.D.1088x1.212x2t α=35° R25	304	1	24	24	
6	XT17055R-04	SHAFT VALVE φ38.1	SA-182M F304/EPW	1	2	2	
5	XT17055R-02	CONE&JACKET	ASSEMBLY	1	45	45	
4		CONE I.D.38/300x4 α=35°	SA-240M 304	1	2.5	2.5	
3		PIPE OF LUG φ108x4 L=1177	304	3	12.2	36.6	
2		PIPE φ32x3 L=676	304	3	1.5	4.5	
1	XTQB01-01	ADJUST FEET ASSEMBLY I D=φ108	304	3	3	9	

DRAW		USA-CDS-FMT2(XTOT17011)	VER. No.	2
DESIN			ITEM. No.	/
CHKD			5BBL FERMENTATION TANK	
APPD				
SER.No.			XT17-201-210	
DWG.No.	XT17055R-00	SCALE	1:8	DRAW



38	XTQB02-03	VENT SOCKET	304	1	0.1	0.1	
37	3A	FERRULE(SHORT) φ38.1x1.65 B=12.7	SA-182M F304	1	0.2	0.2	
36	3A	PIPE φ38.1x1.65 L=62	SA-312M TP304	1	0.4	0.4	
35		INSULATION PLATE φ212/φ40x3t	304-2B	1	2	2	
34		INSULATION PLATE 3t	304-2B	1	5	5	
33		LEG PLATE 3t	304	3	1	3	
32		LEG PLATE 4t	SA-240M 304	3	3	9	
31	0900579250	TET G3/4"	SA-182M F316L	1	0.5	0.5	
30		PLATE 2t	304-2B	1	1	1	
29	3A	FERRULE UNION WITH BLIND φ42.6x3.89	SA-182M F304/EPW	1	0.2	0.2	
28	3A	FERRULE(SHORT) φ63.5x1.65 B=12.7	SA-182M F304	1	0.2	0.2	
27	3A	PIPE φ63.5x1.65 L=177	SA-312M TP304	1	0.4	0.4	
26		BASE PLATE 80x171x5t	SA-240M 304 2B	2	0.5	1	
25		LIFTING LUG 10t	304	2	2	4	
24	(LYSF)DQW-03	CLAMP ASEPTIC SAMPLE VALVE DN25	SA-182M F304/EPW	1	1	1	
23	DIN32676	FERRULE UNION φ29	SA-182M F304/EPW	1	0.5	0.5	
22		PLATE 2t	304-2B	1	1	1	
21	(LYSF)GSZ-01	φ45 ROTARY SPARY HEAD 1"	304	1	1	1	
20	3A	45° ELBOW φ25.4x1.65 L~220	SA-403M WP304	2	0.2	0.4	
19	3A	PIPE φ25.4x1.65 L~220	SA-312M TP304	1	0.2	0.2	
18	3A	FERRULE UNION WITH BLIND φ81.9x4.5 B=46	SA-182M F304/EPW	1	0.2	0.2	
17	3A	FERRULE(SHORT) φ25.4x1.65 B=12.7	SA-182M F304	1	0.2	0.2	
16	3A	FERRULE(SHORT) φ19.05x1.65 B=12.7	SA-182M F304	3	0.2	0.6	
15	XT17055R-05	NAME PLATE ASSEMBLY	304-2B	1	0.2	0.2	
14		ROUND MANHOLE WITH GLASS I.D.400x4	SA-240M 304/EPW	1	20	20	
13	XT17055R-01	HEAD THROUDS1(min3.5) R=90 t=90 h=25	SA-240M 304	1	27	27	
12		LADDER φ20 L~800	304	1	1.7	1.7	
11		LADDER PLATE φ50x3	304-2B	2	0.1	0.2	